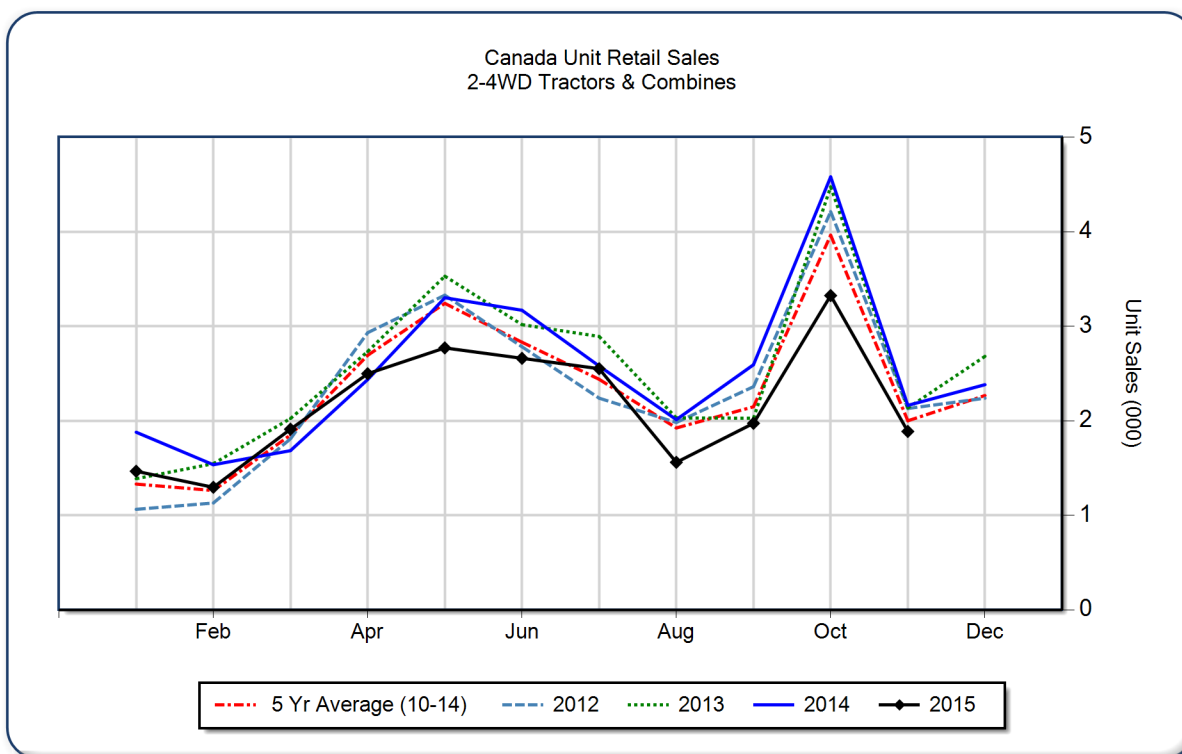


November 2015 Flash Report Canada Unit Retail Sales

Copyright, AEM. All rights reserved. If data is referenced, please acknowledge AEM as the source.

	November			YTD - November			Beginning Inventory Nov 2015
	2015	2014	%Chg	2015	2014	%Chg	
2WD Farm Tractors							
< 40 HP	836	870	-3.9	11,943	12,942	-7.7	9,102
40 < 100 HP	582	686	-15.2	5,417	6,454	-16.1	4,242
100+ HP	250	345	-27.5	4,014	5,324	-24.6	2,111
Total 2WD Farm Tractors	1,668	1,901	-12.3	21,374	24,720	-13.5	15,455
4WD Farm Tractors	79	101	-21.8	773	1,138	-32.1	331
Total Farm Tractors	1,747	2,002	-12.7	22,147	25,858	-14.4	15,786
Self-Prop Combines	140	161	-13.0	1,752	2,075	-15.6	426



These data are, in part, estimates that are subject to revisions when final detailed data become available. Because of the seasonal nature of the industry, comparisons of monthly data from one period to another should be done with extreme caution. These data represent most, but not all, of the manufacturers in each product category being sold at retail in Canada.

Restricted Information from the Association of Equipment Manufacturers